

## Model 9670

### Audio Automatic Gain Control

The LevelTrack™ Audio AGC option adds a user configurable audio level management system to Avenue signal processing modules. LevelTrack will correct mismatched audio levels between different program sources or segments within a program. Errors of this type are regrettably common due to inconsistencies between different providers and program elements.

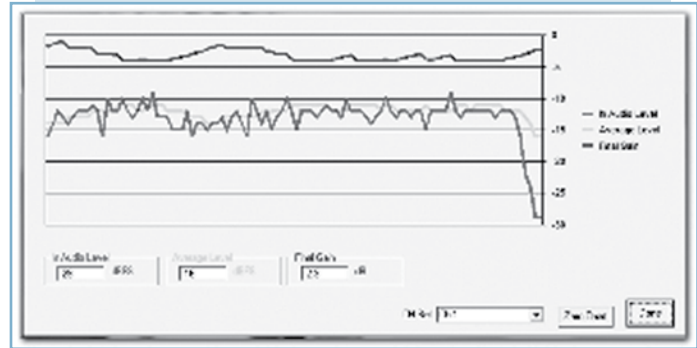
LevelTrack will automatically monitor the levels in up to 8 audio channels. Based upon the history in each channel, gradual changes are applied to prevent the audio level from dropping below or exceeding user programmable thresholds. This automatic level control can be applied on an individual channel or stereo pair basis. By adjusting the overall level of the signal, rather than masking the errors with compression, LevelTrack will not upset the internal dynamics of the program material.

User control is provided over the parameters for minimum and maximum signal targets, maximum gain and attenuation, attack time, and transition time. This flexibility allows the operator to customize LevelTrack to suit the specific audio level challenges in a particular installation. All of these parameters can be adjusted through the Avenue Control System.

LevelTrack operates downstream of the manual audio level adjustments that are already provided in Avenue modules. This allows the automatic feature to assist the operator when needed, without needing to be enabled or disabled.

The LevelTrack product is available through a software license and does not require any additional hardware. It will operate on these modules:

- 7550 HD/SD Video Processing Frame Sync  
(requires 7615 or 8415)
- 7555 HD / SD Video Processing Frame Synchronizer
- 7660 HD / SD Embedder, Disembedder and Data Inserter
- 7900 HD Up/Down/Cross Converter  
(requires 7615 or 8415)
- 7910 HD Upconverter and Cross Converter  
(requires 7615 or 8415)
- 7920 HD Downconverter  
(requires 7615 or 8415)
- 7930 HD Cross Converter  
(requires 7615 or 8415)
- 7940 SD Aspect Ratio Converter  
(requires 7615 or 8415)
- 8400 SD Video Processing Frame Sync  
(requires 8415)
- 8500 Video Processing Frame Sync, ADC, DAC and TBC  
(requires 8415)
- 9550 3G / HD / SD Video Processing Frame Synchronizer
- 9600 3G / HD / SD Embedder, Disembedder and Data Inserter



*Avenue PC shows the LevelTrack graph, displaying audio automatic gain control*